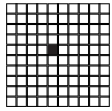
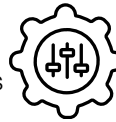


## Partner With Bison® To...



### Differentiate

... your bus, truck, off-road and rail equipment using the highest quality motors and pumps that provide heavy-duty, yet light weight and compact designs, CAN functionality, long life and much more.



### Customize

... your vehicles' air- and other fluid-moving solutions, working side by side Bison® engineers who know the dynamics of fluid and have hundreds of years of cumulative experience.



### Save Time

... by running performance tests and rapid prototyping and more through a Bison® state-of-the-art engineering laboratory.



### Gain Access

... to heavy-duty transportation pumps and motors that are Buy America Compliant.

## Differentiate Your End Products With ROTRON® Pumps and Motors

- Brushless sealless pumps
- Brushless DC motors
- SAE J1939 CAN functionality
- Long life up to 60,000 hours
- Maintenance-free design



Bison® also manufactures a full line of brushless DC fans and impeller style blowers.

## Our Engineers Can Customize Your Air- and Other Fluid-Moving Solutions to...

- Heat and cool interiors
- Cool electronics, batteries & drive motors
- De-ice entryways
- Defrost windows
- And so much more!



**LEARN MORE**

**Helping Fleet Owners....**



**Reduce**  
Operational Costs



**Eliminate**  
Downtime



**Increase**  
Service Time,  
Revenues & Profits

# Sealless Pump with 3" Motor



12 GPM

40,000 Hour Design Life/12 Gallon

ROTRON®  
Transportation

## Pump

- Sealless design is leak proof; pump is magnetically coupled to motor
- Motor is removable from pump without draining system
- Environmentally resistant to hot-water spray, salt, fog, shock, and vibration

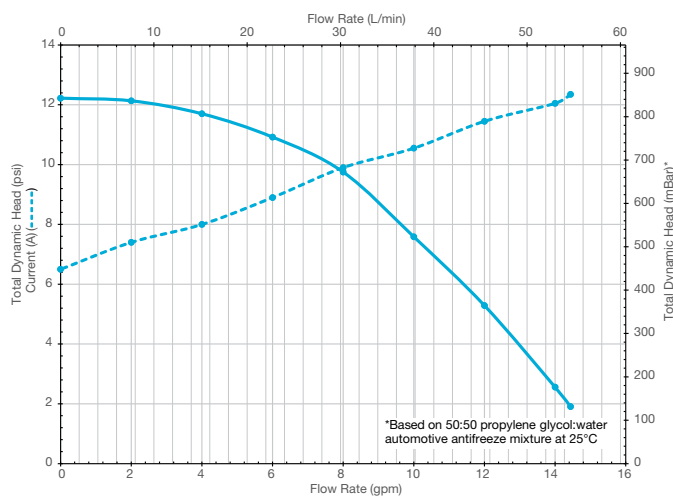
## Motor

- 12 VDC and 24 VDC models available
- Variable speed version available
- Electronically Commutated DC (ECDC™) motor design provides for maintenance-free operation by eliminating brush motor failures and brush maintenance
- Rare-earth magnets provide high efficiency and low current draw
- "O" ring sealed for harsh operating environment
- Medium-duty construction required for transit bus and construction equipment

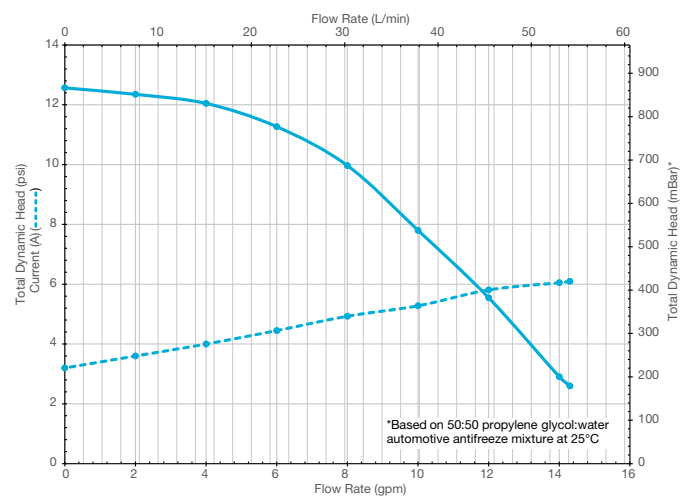


## Performance

### 12 Volt



### 24 Volt



LEARN  
MORE

# Sealless Pump with 3" Motor

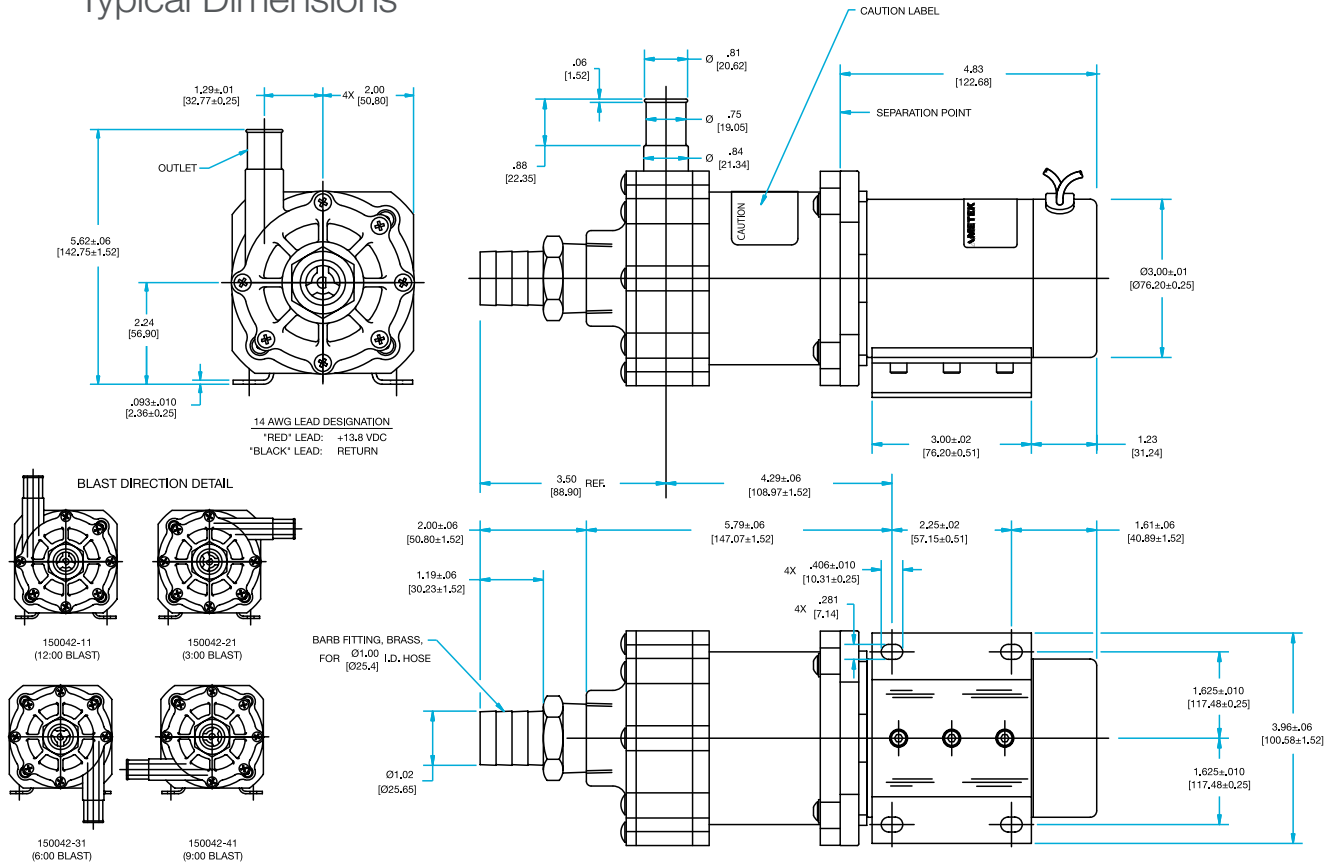


12 GPM

40,000 Hour Design Life/12 Gallon

ROTRON®  
Transportation

## Typical Dimensions



- Motor design characteristics are based on an operating environment of 85°C.
- Approximate typical weight: 8.0 lbs.



LEARN  
MORE

This document is for informational purposes only and should not be considered as a binding description of the products or their performance in all applications. Actual performance will vary depending on the operating environment and application.

# Sealless Pump with 3" Motor



15 GPM

40,000 Hour Design Life/15 Gallon

ROTRON®  
Transportation

## Pump

- Sealless design is leak proof; pump is magnetically coupled
- Motor is removable from pump without draining system
- Environmentally resistant to hot-water spray, salt, fog, shock and vibration
- Cast brass pump designed for heavy-duty applications

## Motor

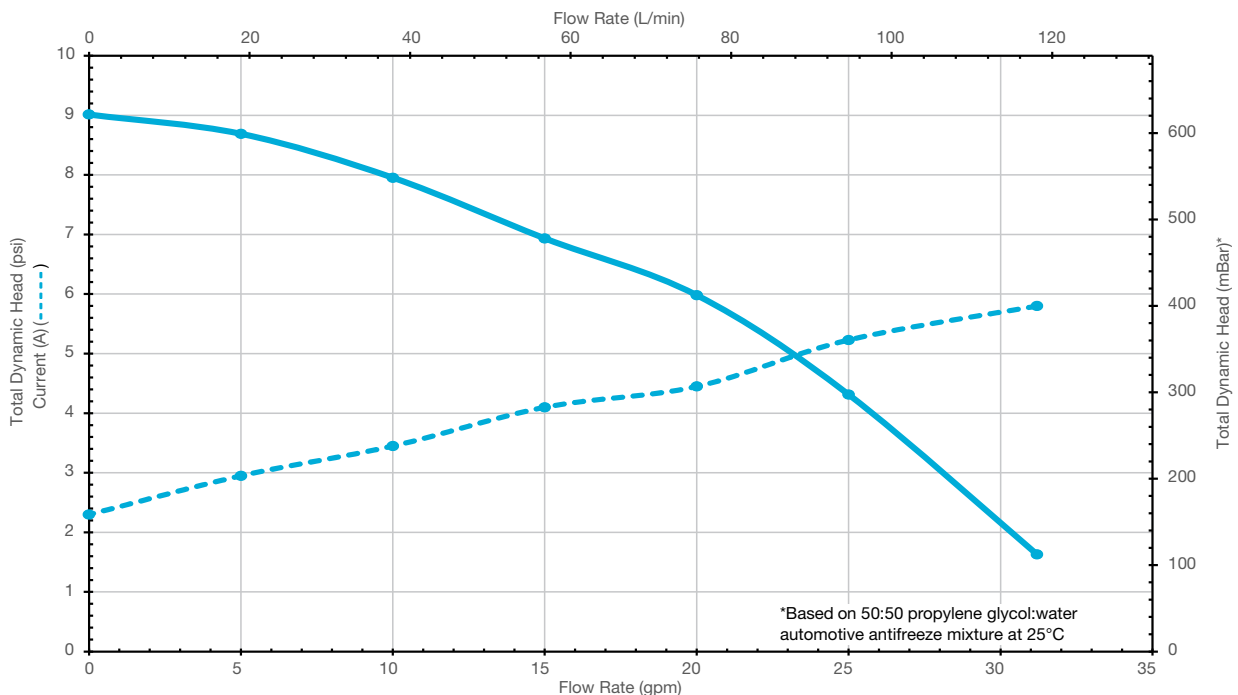
- Efficient brushless DC motor
- Electronically Commutated DC (ECDC™) motor design provides for maintenance-free operation
- "O" ring sealed for harsh operating environment
- Designed for bus and on- and off-highway applications



## Options

- Variable speed control
- Pump outlet discharge orientation
- Baseplate versions
- Hose barb versions

## Performance



# Sealless Pump with 3" Motor

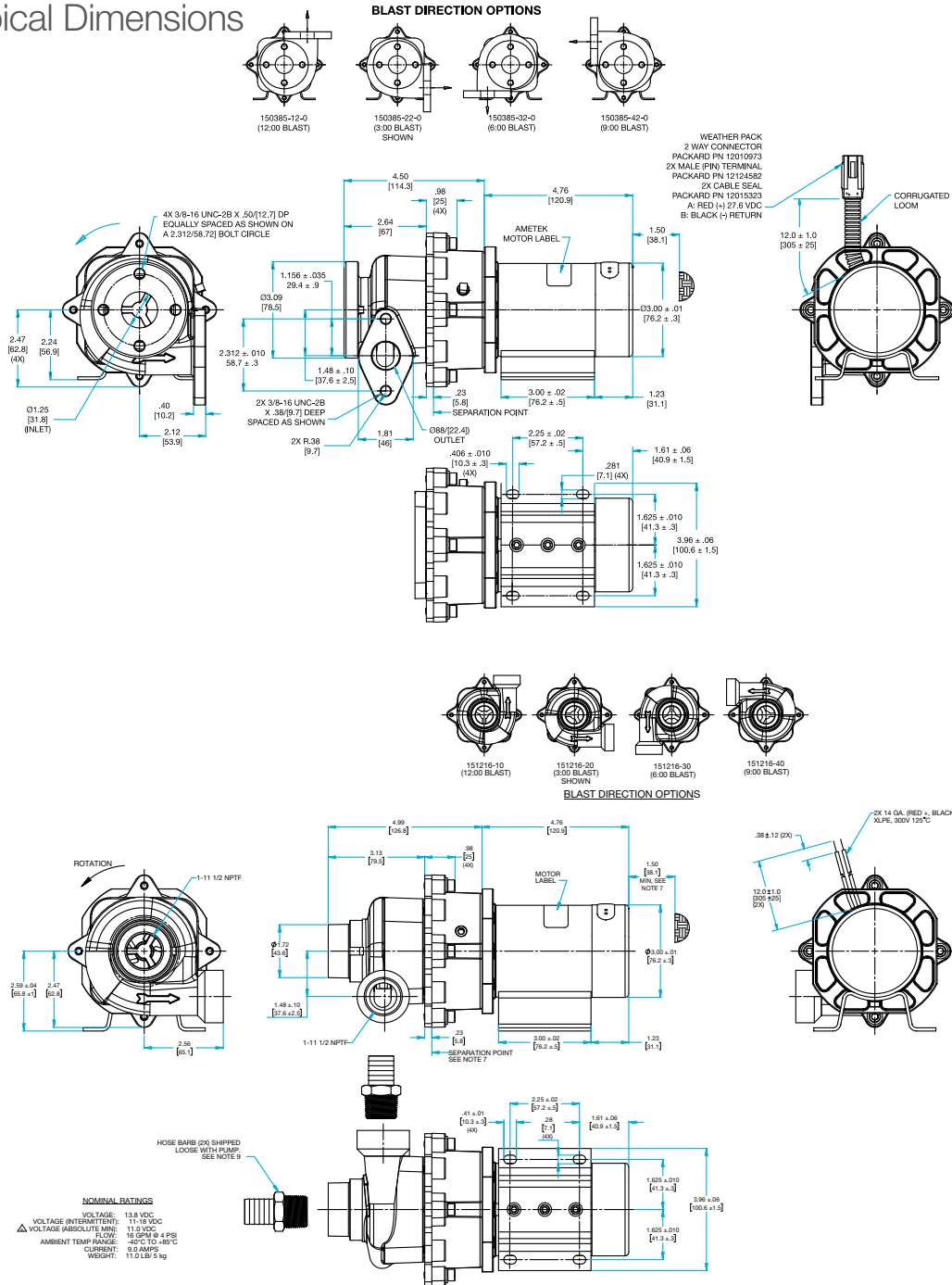


15 GPM

40,000 Hour Design Life/15 Gallon

ROTRON®  
Transportation

## Typical Dimensions



- Motor design characteristics based on an operating environment of 85°C.
- Approximate typical weight 10 lbs.

This document is for informational purposes only and should not be considered as a binding description of the products or their performance in all applications. Actual performance will vary depending on the operating environment and application.

# 100

## About **Bison®**

For more than 100 years, Bison® has helped customers differentiate their products by developing robust, flexible and durable motors, blowers and pumps under the brand names - Bison® Gearmotors, Lamb®, Nautilair®, Prestolite Motors, ROTRON® Regenerative Blowers, ROTRON® Transportation and Windjammer®.

Bison® engineers thrive on technical challenges and provide customers collaborative, customizable and optimized fluid-moving, fractional and integral horsepower solutions. Bison® has worldwide sales representative support, research facilities and manufacturing facilities in the United States, China and Mexico. The company is headquartered in Kent, Ohio.

---

*Bison® is a business of AMETEK, Inc. — a leading global provider of industrial technology solutions serving a diverse set of attractive niche markets with annual sales over \$6.0 billion.*

# 75

## About **ROTRON® Transportation Pumps and Motors**

For more than 75 years, Bison® has designed and manufactured **ROTRON®** brushless sealless pumps and brushless DC motors for heavy-duty transportation OEMs building trucks, buses, locomotives, light rail equipment, off-road vehicles and more.

Our ROTRON® transportation products offer long life up to 60,000 hours, CAN J1939 functionality and maintenance-free designs. The fluid-moving technologies can be customized to OEM specs and are **Buy America Compliant**.