



Floorcare & Specialty Motors

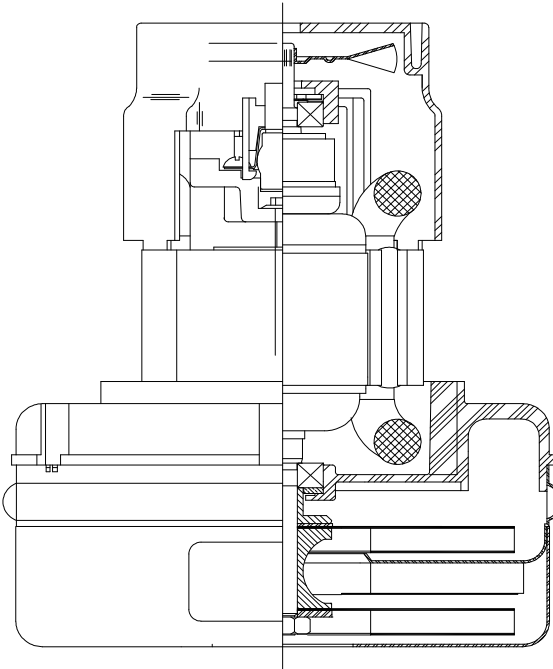
Model: 116448-00

DESCRIPTION

- Two stage
- 120 volts
- 5.7"/145 mm diameter
- Double ball bearings
- Single speed
- Peripheral bypass discharge
- Thermoset fan end bracket
- Aluminum commutator bracket

DESIGN APPLICATION

- Equipment operating in environments requiring separation of working air from motor ventilating air
- Designed to handle clean, dry, filtered air only

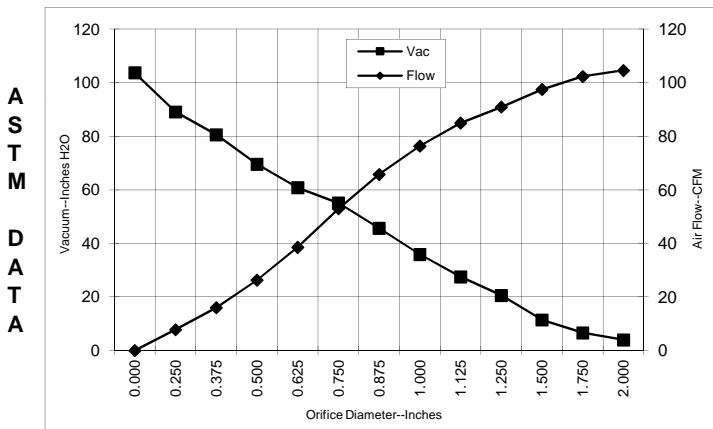


SPECIAL FEATURES

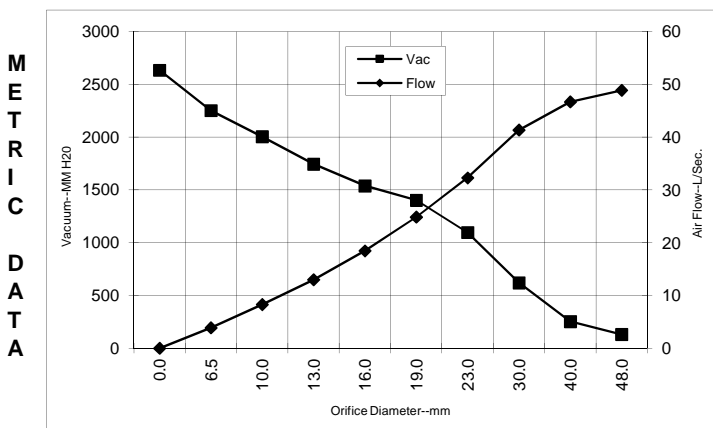
- Suitable for 120 volt AC operation, 50/60 Hz
- UL recognized, category PRGY2 (E47185)
- CSA certified, class 1611 01 (LR31393)
- Provision for grounding
- Skeleton-frame design
- The Lamb Electric vacuum motor line offers a wide range of performance levels to meet design needs.

TYPICAL MOTOR PERFORMANCE.*

(At 120 volts, 60Hz, test data is corrected to standard conditions of 29.92 Hg, 68° F.)



Orifice (Inches)	Amps	Watts (In)	RPM	Vac (In.H2O)	Flow (CFM)	Air Watts
2.000	9.6	1096	19750	4.0	104.6	49
1.750	9.6	1100	19740	6.6	102.4	80
1.500	9.7	1109	19750	11.4	97.5	131
1.250	9.8	1117	19750	20.6	90.9	220
1.125	9.8	1123	19750	27.5	85.0	275
1.000	9.8	1117	19750	35.9	76.4	323
0.875	9.7	1105	19750	45.6	65.8	353
0.750	9.2	1057	20140	55.1	53.0	343
0.625	8.5	971	20140	60.8	38.6	276
0.500	7.9	911	21230	69.6	26.3	215
0.375	7.4	858	22510	80.6	16.0	152
0.250	6.8	793	23700	89.1	7.8	82
0.000	6.3	738	24880	103.7	0.0	0



Orifice (mm)	Amps	Watts (In)	RPM	Vac (mm H2O)	Flow (L/Sec)	Air Watts
48.0	9.6	1098	19746	131	48.9	63
40.0	9.7	1106	19747	254	46.7	116
30.0	9.8	1120	19750	620	41.4	251
23.0	9.7	1108	19750	1097	32.3	346
19.0	9.2	1055	20140	1402	24.9	342
16.0	8.5	974	20140	1539	18.5	279
13.0	8.0	917	21121	1746	13.0	222
10.0	7.5	866	22318	2005	8.3	161
6.5	6.8	796	23641	2253	3.9	85
0.0	6.3	738	24880	2635	0.0	0

Note: Metric performance data is calculated from the ASTM data above.

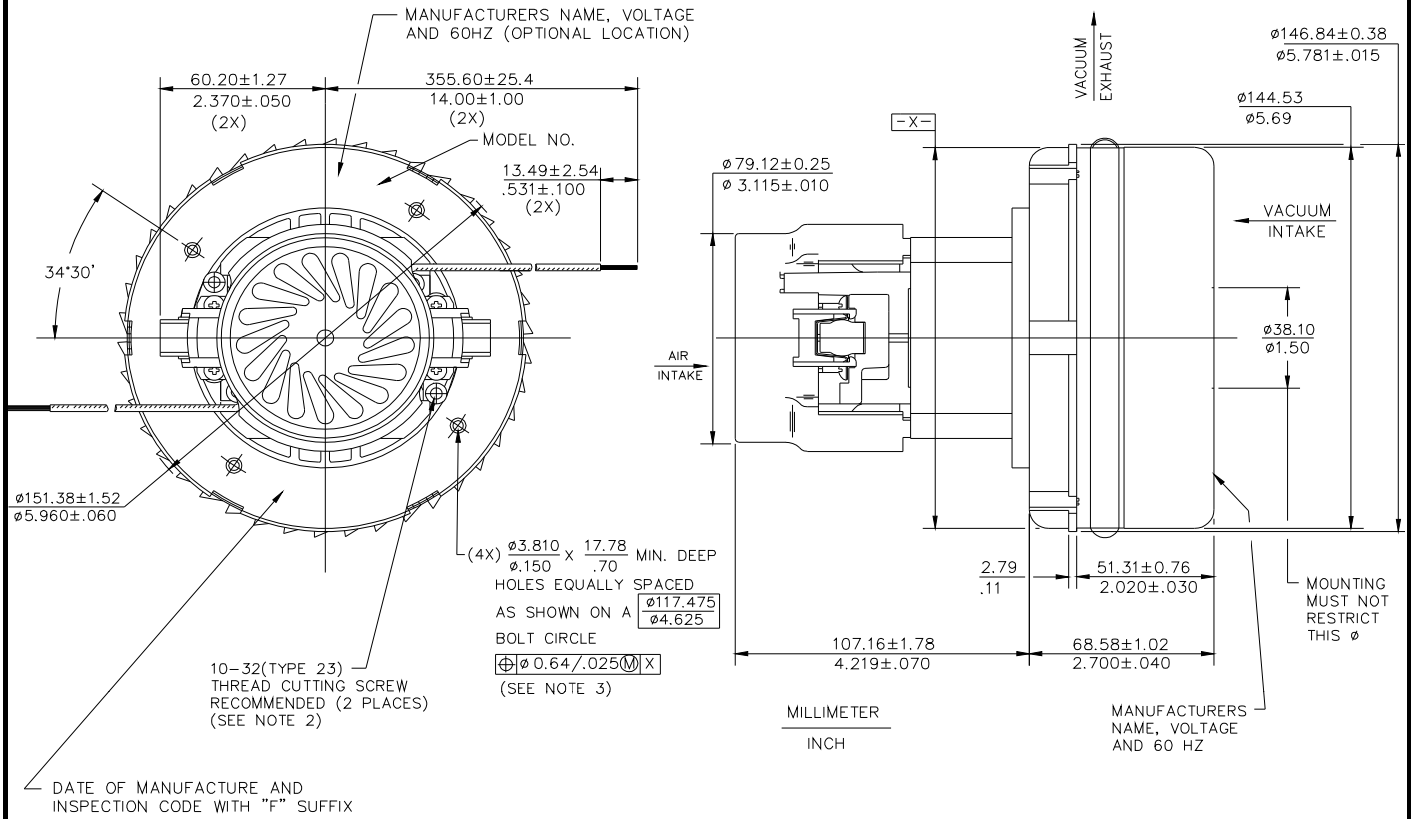
* Data represents performance of a typical motor sampled from a large production quantity. Individual motor data may vary due to normal manufacturing variations.

Test Specs:	120 volts	Minimum Sealed Vacuum:	90.0"	ORIFICE:	7/8 "	Minimum Vacuum:	39.5"	Maximum Watts:	1150
-------------	-----------	------------------------	-------	----------	-------	-----------------	-------	----------------	------

DIMENSIONS

NOTES:

1. LEADS: 18GA STRANDED, LEADS CAN BE ANY COLOR EXCEPT GREEN OR GREEN WITH YELLOW STRIPE.
2. GROUNDING OR EARTHING PROVISIONS: USE HOLES AS INDICATED FOR GROUNDING OR EARTHING. REFER TO APPROPRIATE LISTING OR REGULATORY AGENCY FOR PROPER METHOD OF GROUNDING OR EARTHING.
3. RECOMMENDED SCREW SIZE 10-16 TYPE BT OR TYPE 25 THREAD CUTTING SCREW. MAXIMUM PENETRATION 17.40/.685.



IMPORTANT NOTE: Pictorial and dimensional data are subject to change without notice. Contact factory for current revision levels.

WARNING - When using AMETEK Lamb Electric bypass motors in machines that come in contact with foam, liquid (including water), or other foreign substances, the machine must be designed and constructed to prevent those substances from reaching the fan system, motor housing, and electrical components. Lamb Electric vacuum motors other than hazardous duty models should not be applied in machines that come in contact with dry chemicals or other volatile materials. Failure to observe these precautions could cause flashing (depending on volatility) or electrical shock which could result in property damage and severe bodily injury, including death in extreme cases. All applications incorporating Lamb Electric motors should be submitted to appropriate organizations or agencies for testing specifically related to the safety of your equipment.

AMETEK/Floorcare & Specialty Motors
www.ametekfsm.com