

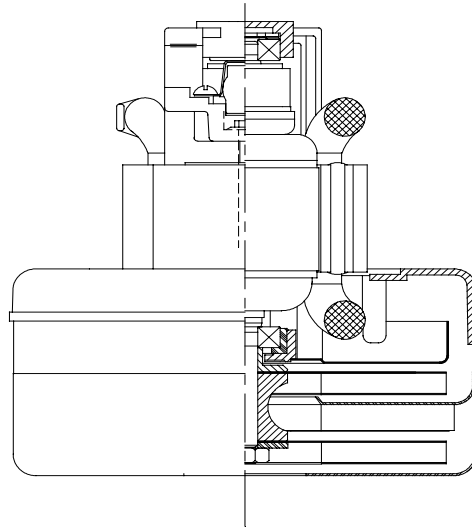


**DESCRIPTION**

- Two stage
- 120 volt
- 5.7"/145mm diameter
- Double ball bearings
- Single speed
- Thru flow discharge
- Aluminum fan end bracket
- Aluminum commutator bracket

**DESIGN APPLICATION**

- Equipment operating in not environments requiring separation of working air from motor ventilating air.
- Designed to handle clean, dry, filtered air only.



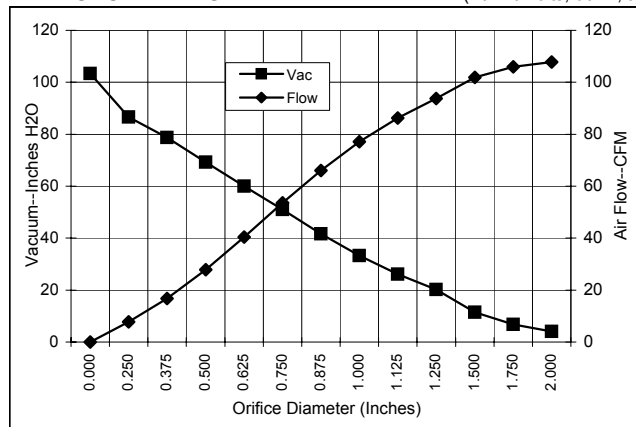
**SPECIAL FEATURES**

- Suitable for 120 volt AC operation, 50/60 Hz
- UL recognized, category PRGY2 (E47185)
- CSA certified, class 1611 01 (LR31393)
- Provision for grounding
- Skeleton frame design
- Thermostat protection, automatic reset
- The Lamb vacuum motor line offers a wide range of performance levels to meet design needs

**TYPICAL MOTOR PERFORMANCE.\***

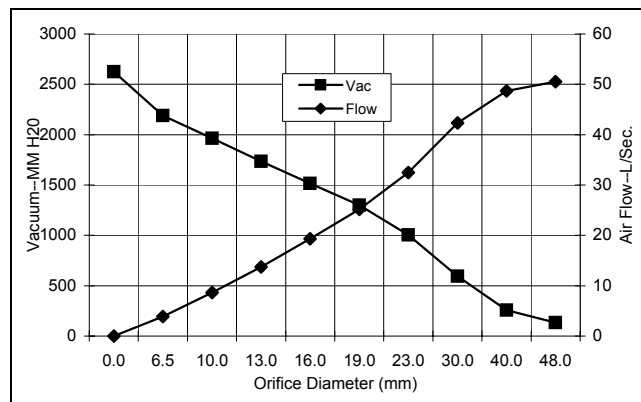
(At 120 volts, 60Hz, test data is corrected to standard conditions of 29.92 Hg, 68° F.)

**ASTM DATA**



Orifice (Inches)	Amps	Watts (In)	RPM	Vac (In.H <sub>2</sub> O)	Flow (CFM)	Air Watts
2.000	9.0	1031	19420	4.1	107.8	52
1.750	9.0	1035	19321	6.7	106.0	84
1.500	9.2	1046	19242	11.5	101.9	138
1.250	9.3	1061	19197	20.2	93.7	222
1.125	9.3	1063	19222	26.1	86.3	264
1.000	9.2	1052	19331	33.3	77.1	301
0.875	9.0	1028	19589	41.7	66.0	323
0.750	8.2	986	20094	51.0	53.6	201
0.625	8.0	921	20796	60.0	40.4	285
0.500	7.3	850	21798	69.2	27.8	226
0.375	6.2	772	23036	78.8	16.7	154
0.250	5.9	694	24300	86.6	7.8	79
0.000	5.1	656	25464	103.3	0.0	0

**METRIC DATA**



Orifice (mm)	Amps	Watts (In)	RPM	Vac (mm H <sub>2</sub> O)	Flow (L/Sec)	Air Watts
48.0	9.0	1033	19376	133	50.5	66
40.0	9.1	1043	19266	256	48.7	122
30.0	9.3	1062	19211	595	42.3	245
23.0	9.0	1034	19525	1006	32.5	318
19.0	8.2	985	20108	1299	25.2	203
16.0	8.0	924	20768	1515	19.3	282
13.0	7.4	857	21698	1735	13.7	232
10.0	6.3	784	22850	1964	8.7	165
6.5	5.9	698	24237	2190	3.9	83
0.0	5.1	656	25464	2624	0.0	0

Note: Metric performance data is calculated from the ASTM data above.

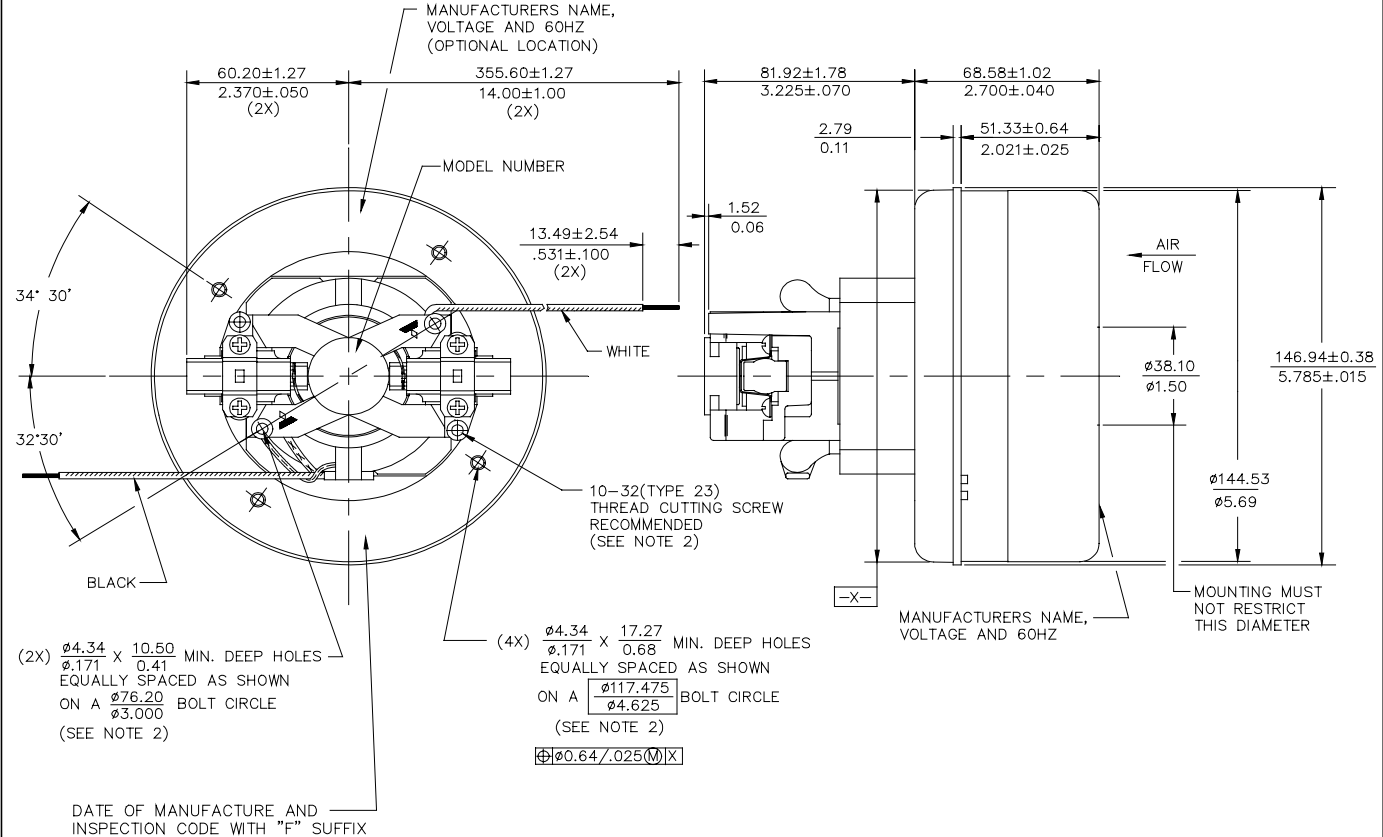
\* Data represents performance of a typical motor sampled from a large production quantity. Individual motor data may vary to normal manufacturing variations.

<b>Test Specs:</b>	120 volts	<b>Minimum Sealed Vacuum:</b>	95.0"	<b>ORIFICE:</b>	7/8"	<b>Minimum Vacuum:</b>	37.0"	<b>Maximum Watts:</b>	1200
--------------------	-----------	-------------------------------	-------	-----------------	------	------------------------	-------	-----------------------	------

**DIMENSIONS**

**NOTES:**

1. LEADS: 18GA STRANDED.
2. GROUNDING OR EARTHING PROVISIONS: USE HOLES AS INDICATED FOR GROUNDING OR EARTHING. REFER TO APPROPRIATE LISTING OR REGULATORY AGENCY FOR PROPER METHOD OF GROUNDING OR EARTHING.



**IMPORTANT NOTE:** Pictorial and dimensional data are subject to change without notice. Contact factory for current revision levels.

**WARNING** - Ametek/Lamb Electric thru-flow vacuum motors must never be used in applications in which wet or moist conditions are involved, where dry chemicals or other volatile materials are present or where airflow may be restricted or blocked. Such motors are designed to permit the vacuumed air to pass over the electrical winding to cool it. Thus any foam, liquid (including water), dry chemical or other foreign substance will come in contact with electrical conductors which could cause combustion (depending on volatility) or electrical shock. Failure to observe these precautions could result in property damage and severe personal injury, including death in extreme cases. All applications incorporating Lamb motors should be submitted to Underwriters Laboratories Inc. or other appropriate organizations or agencies for testing specifically related to the safety of your equipment.

**AMETEK/Lamb Electric Division**  
 627 Lake Street  
 Kent, Ohio 44240  
 U.S.A.  
 Tel: (330) 673-3451  
 Fax: (330) 673-8994

**Ametek GmbH**  
 P. O. Box 1251  
 D-71667 Marbach  
 Germany  
 Phone: + 49-714-484-9512  
 Fax: + 49-714-484-9513

**AMETEK/Singapore Private Limited**  
 10 Ang Mo Kio Street 65  
 # 05-12 Techpoint  
 Singapore 2056  
 Tel: + 65-484-2388  
 Fax: + 65-481-6588