



AMETEK
LAMB ELECTRIC

Product Bulletin

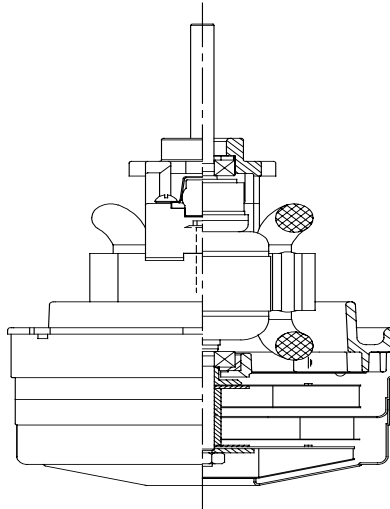
Model: 117776-00

DESCRIPTION

- Two stages
- 120 volts
- 5.1"/130 mm diameter
- Double ball bearings
- Single speed
- Thru flow discharge
- Thermoset fan end bracket
- Aluminum commutator bracket

DESIGN APPLICATION

- Equipment operating in environments not requiring separation of working air from motor ventilating air
- Designed to handle clean, dry, filtered air only

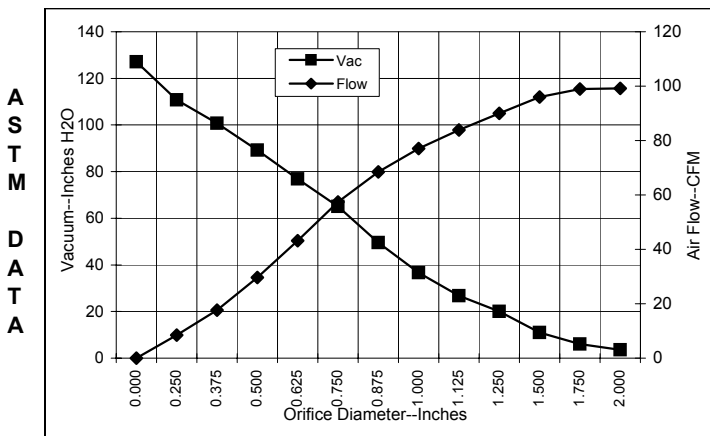


SPECIAL FEATURES

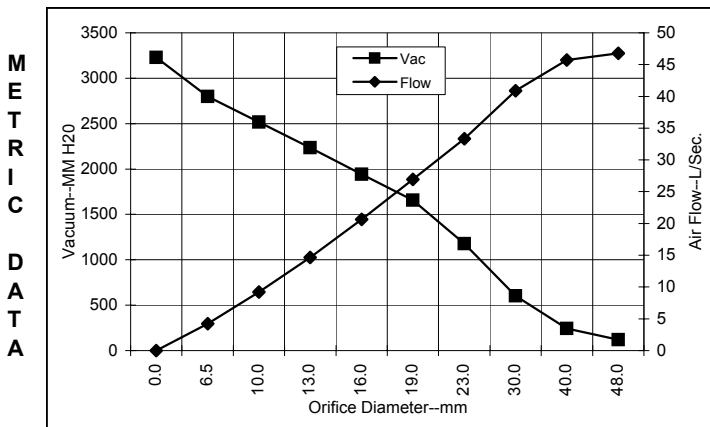
- Suitable for 120 volt AC operation, 50/60 Hz
- UL recognized, category PRGY2 (E47185)
- Skeleton frame design
- Provision for grounding
- Shaft extension
- The Lamb vacuum motor line offers a wide range of performance levels to meet design needs

TYPICAL MOTOR PERFORMANCE.*

(At 120 volts, 60Hz, test data is corrected to standard conditions of 29.92 Hg, 68° F.)



Orifice (Inches)	Amps	Watts (In)	RPM	Vac (In.H ₂ O)	Flow (CFM)	Air Watts
2.000	10.4	1180	25570	3.6	99.2	42
1.750	10.4	1178	25618	6.1	98.9	71
1.500	10.4	1178	25646	11.0	96.0	125
1.250	10.4	1180	25574	20.1	90.0	213
1.125	10.4	1182	25556	26.8	83.9	264
1.000	10.4	1177	25678	36.7	77.1	332
0.875	10.2	1170	25822	49.6	68.5	399
0.750	10.1	1157	26052	65.0	57.4	438
0.625	9.5	1104	26872	76.9	43.2	390
0.500	8.8	1022	28058	89.2	29.7	311
0.375	7.9	922	29690	100.8	17.7	209
0.250	7.1	835	31414	110.7	8.5	110
0.000	6.5	767	33040	127.1	0.0	0



Orifice (mm)	Amps	Watts (In)	RPM	Vac (mm H ₂ O)	Flow (L/Sec)	Air Watts
48.0	10.4	1179	25591	119	46.8	55
40.0	10.4	1178	25638	242	45.7	109
30.0	10.4	1181	25564	604	40.9	241
23.0	10.3	1172	25786	1178	33.3	382
19.0	10.1	1156	26068	1657	27.0	437
16.0	9.5	1106	26839	1941	20.7	392
13.0	8.8	1030	27939	2234	14.7	319
10.0	8.0	937	29445	2516	9.2	224
6.5	7.1	839	31328	2799	4.2	115
0.0	6.5	767	33040	3228	0.0	0

Note: Metric performance data is calculated from the ASTM data above.

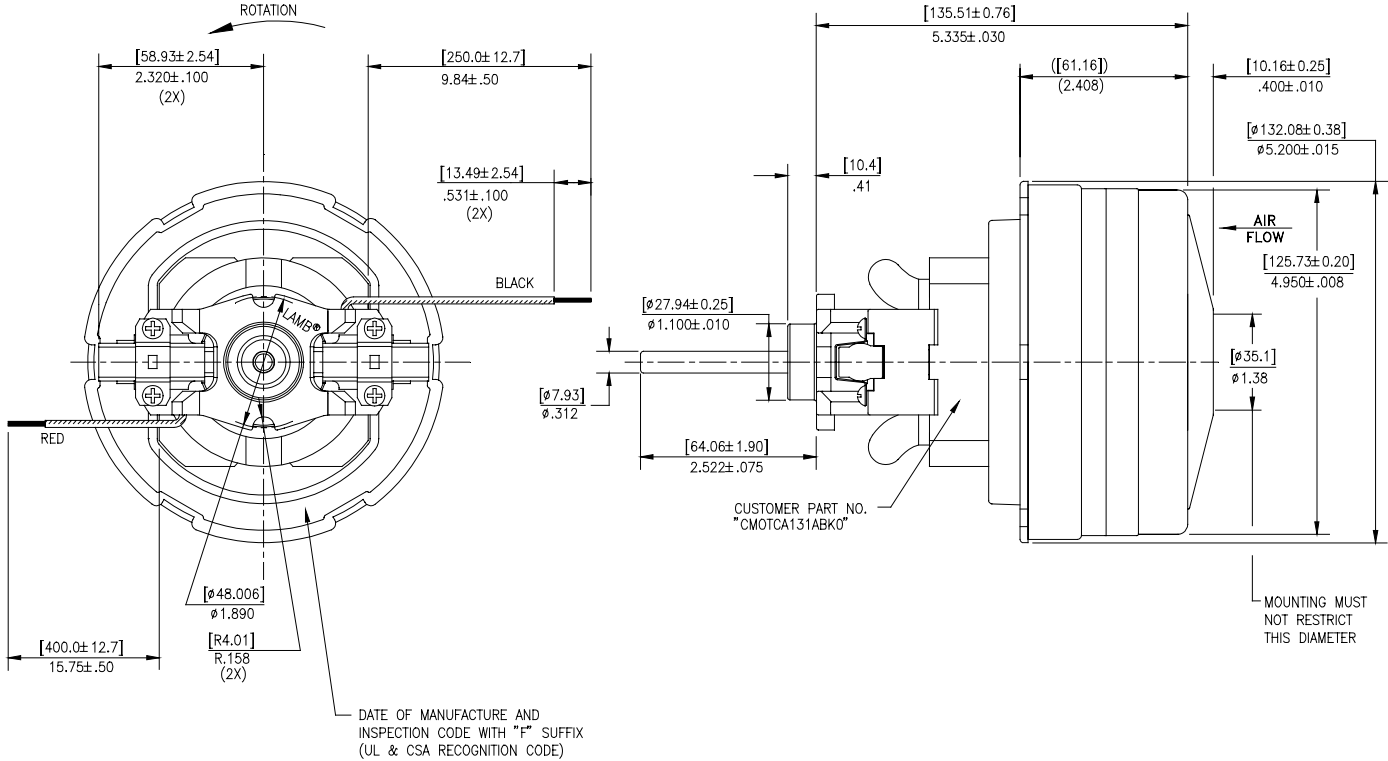
* Data represents performance of a typical motor sampled from a large production quantity. Individual motor data may vary to normal manufacturing variations.

Test Specs:	120 volts	Minimum Sealed Vacuum:	115.0'	ORIFICE:	7/8"	Minimum Vacuum:	43.0"	Maximum Watts:	1275
--------------------	-----------	-------------------------------	--------	-----------------	------	------------------------	-------	-----------------------	------

DIMENSIONS

NOTES:

1. LEADS: 18GA STRANDED.
2. MANUFACTURER'S NAME, MODEL NO., 120V, AND 60Hz TO APPEAR ON MOTOR.



IMPORTANT NOTE: Pictorial and dimensional data are subject to change without notice. Contact factory for current revision levels.

WARNING - Ametek/Lamb Electric thru-flow vacuum motors must never be used in applications in which wet or moist conditions are involved, where dry chemicals or other volatile materials are present or where airflow may be restricted or blocked. Such motors are designed to permit the vacuumed air to pass over the electrical winding to cool it. Thus any foam, liquid (including water), dry chemical or other foreign substance will come in contact with electrical conductors which could cause combustion (depending on volatility) or electrical shock. Failure to observe these precautions could result in property damage and severe personal injury, including death in extreme cases. All applications incorporating Lamb motors should be submitted to Underwriters Laboratories Inc. or other appropriate organizations or agencies for testing specifically related to the safety of your equipment.

AMETEK/Lamb Electric Division
 627 Lake Street
 Kent, Ohio 44240
 U.S.A.
 Tel: (330) 673-3451
 Fax: (330) 673-8994

Ametek GmbH
 P. O. Box 1251
 D-71667 Marbach
 Germany
 Phone: + 49-714-484-9512
 Fax: + 49-714-484-9513

AMETEK/Singapore Private Limited
 10 Ang Mo Kio Street 65
 # 05-12 Techpoint
 Singapore 2056
 Tel: + 65-484-2388
 Fax: + 65-481-6588